



---

NC811 MONTHLY UPDATE

JANUARY 2024

CUMBERLAND UCC

PRESENTED BY  
HOWARD COREY





---

# IMPORTANT DATES



## STATE UCC

Tuesday, Jan 9  
8:00 am

NC811 Events Center,  
Greensboro

## NCLRPC

Wednesday, Jan. 17  
11 am

NC811 Events Center,  
Greensboro

Visit <https://ncucc.org>  
for meeting link

## BOARD

Friday, Jan 19  
8:00 am

Grandover Resort,  
Greensboro

Contact

## NCUDPRB

Tuesday, Jan 23  
10 am

Visit  
<https://udprb.nc.gov>

for location info  
Stephanie Brown for  
details.  
[stephanie@nc811.org](mailto:stephanie@nc811.org)

---

# CALENDAR

NC811 & NCUCC event calendars can be found on [nc811.org](http://nc811.org) or the nc811 app



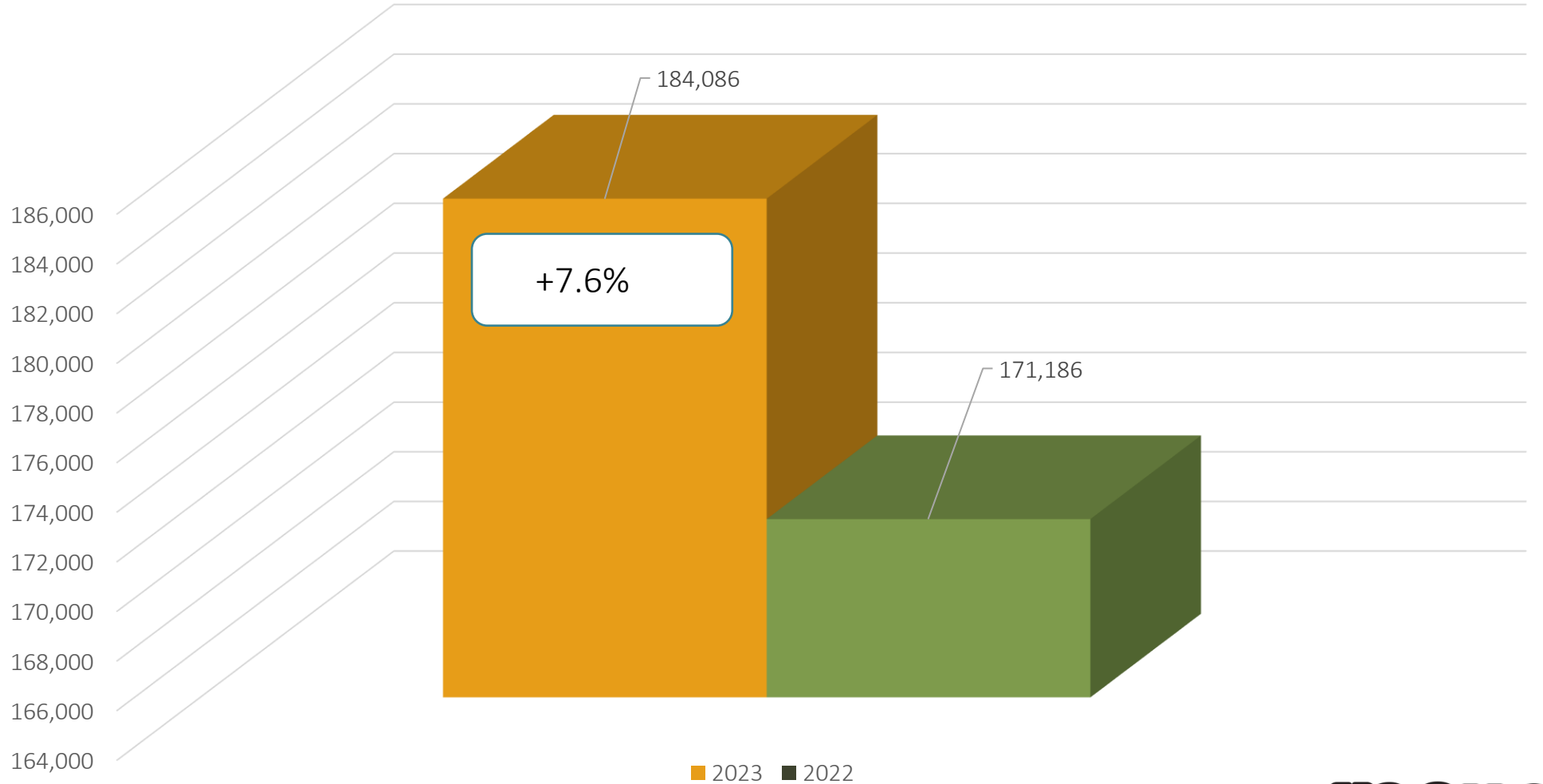
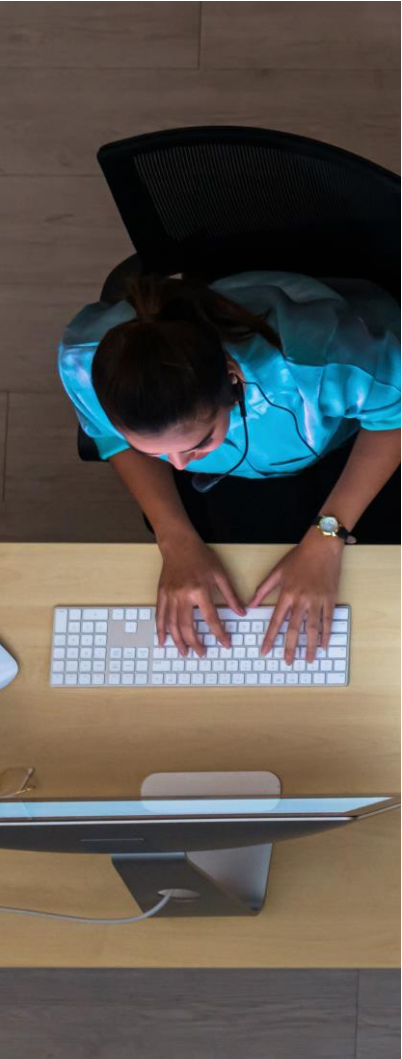
# DATA INSIGHTS

Locate Request, Transmissions,  
County ticket volume and distribution



# Locate Requests for NC

## December 2023 vs 2022



MTD December 2023 – 184,086 / 2022 – 171,186 = +7.6%

YTD 2023 – 2,677,733 / 2022 – 2,497,873 = +7.2 %

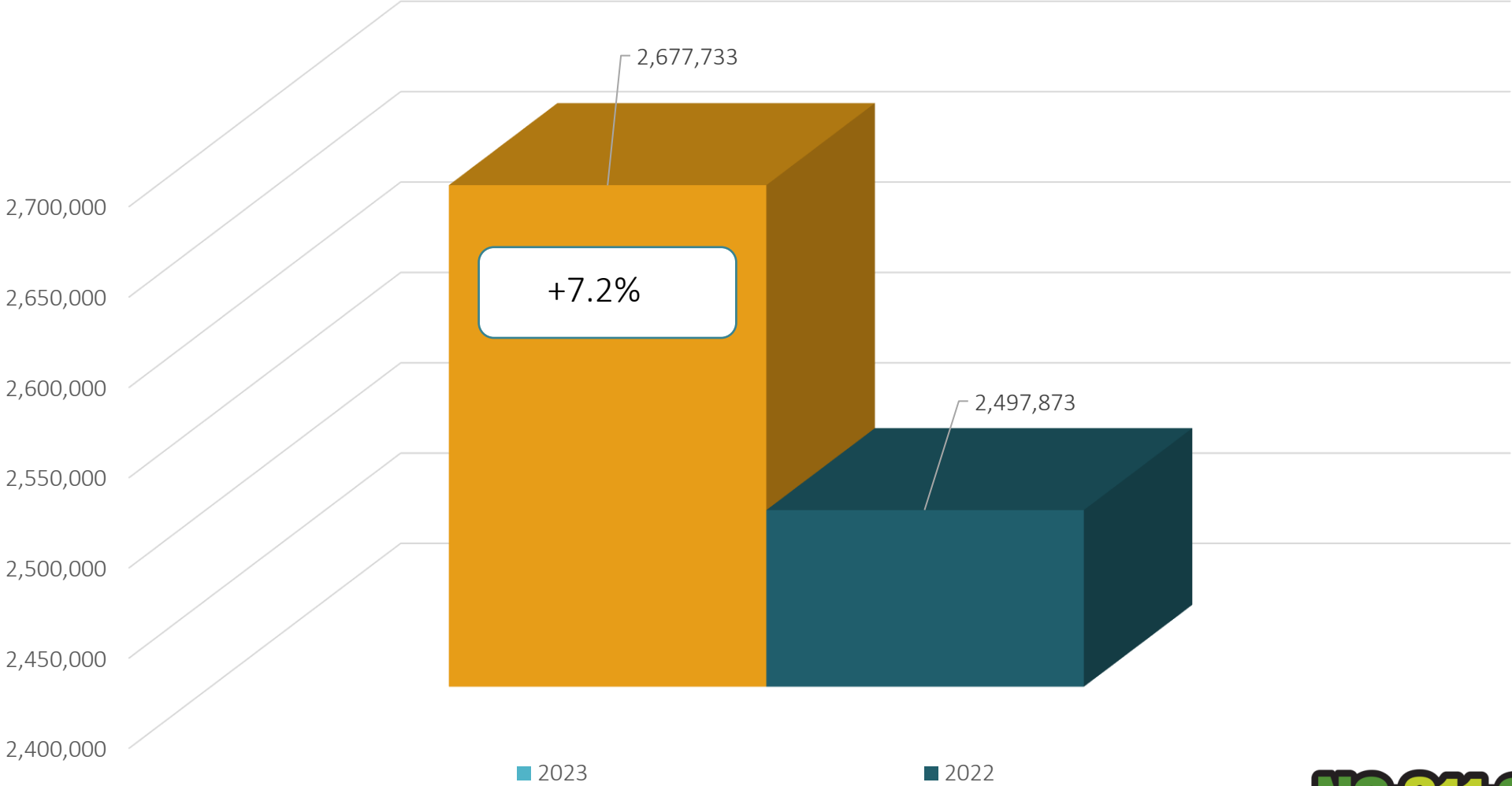
Updates for December 2023 – (60,202) = 32.7% of volume / November 31.5% = +1.2% (Increase the month before)





# Locate Requests for NC

# YTD 2023 vs 2022

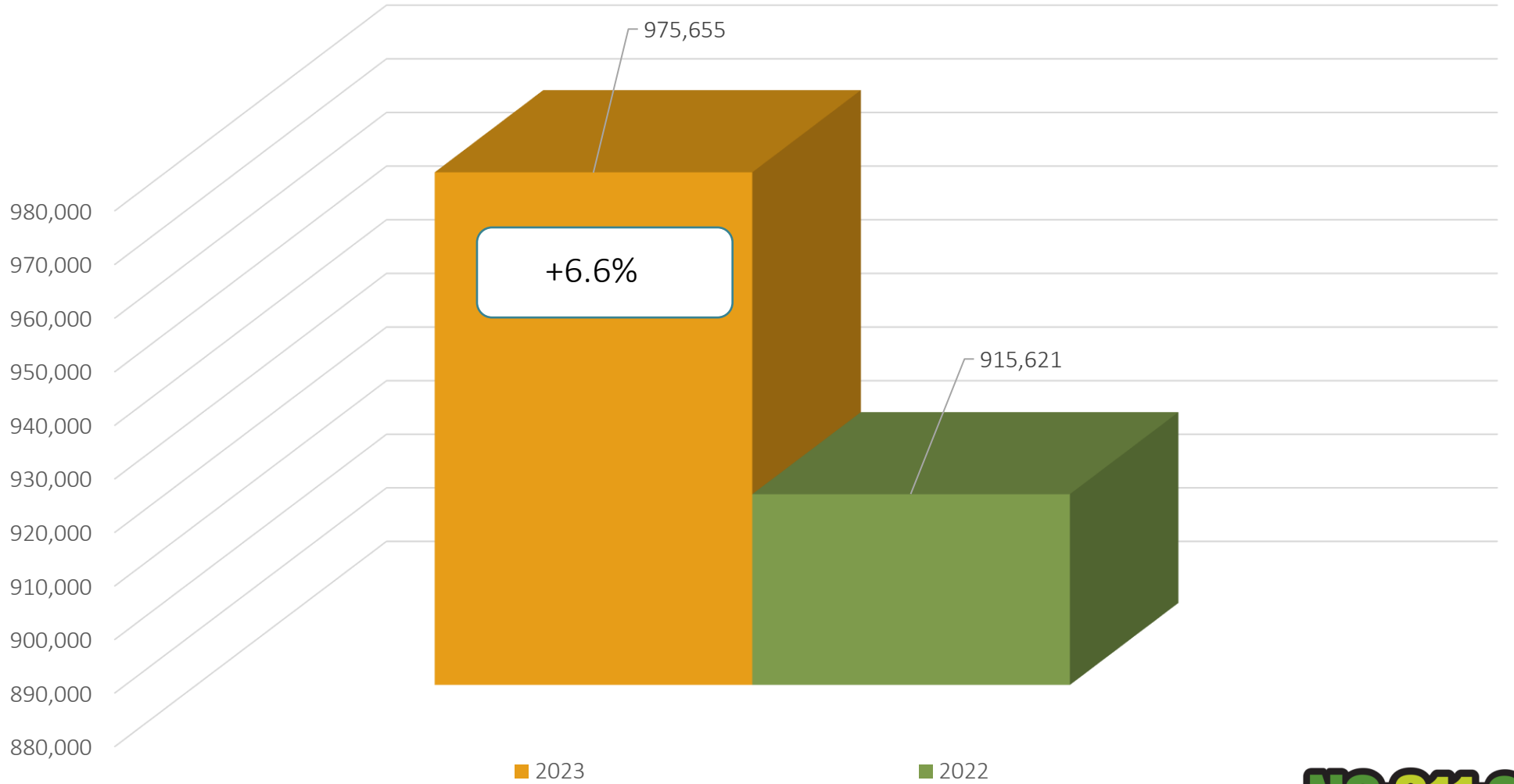
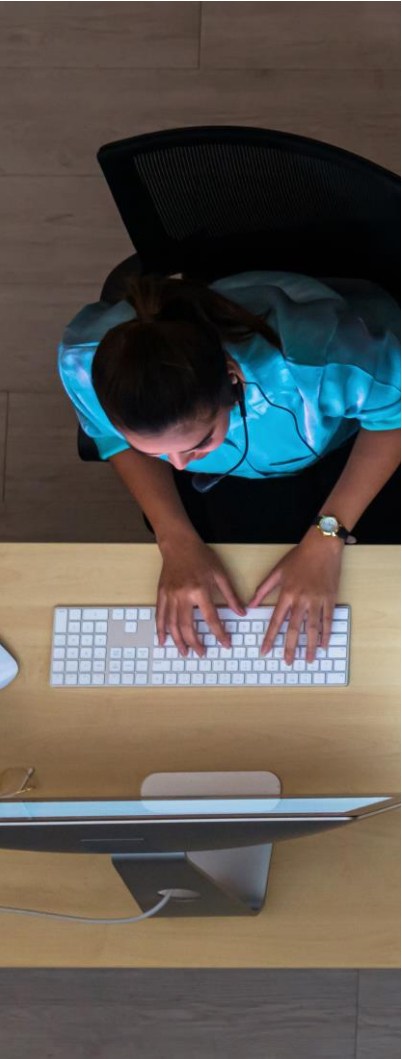


MTD December 2023 – 184,086 / 2022 – 171,186 = +7.6%  
YTD 2023 – 2,677,733 / 2022 – 2,497,873 = +7.2 %  
Updates for December 2023 – (60,202) = 32.7% of volume / November 31.5% = +1.2% (Increase the month before)



# Transmissions for NC

## December 2023 vs 2022



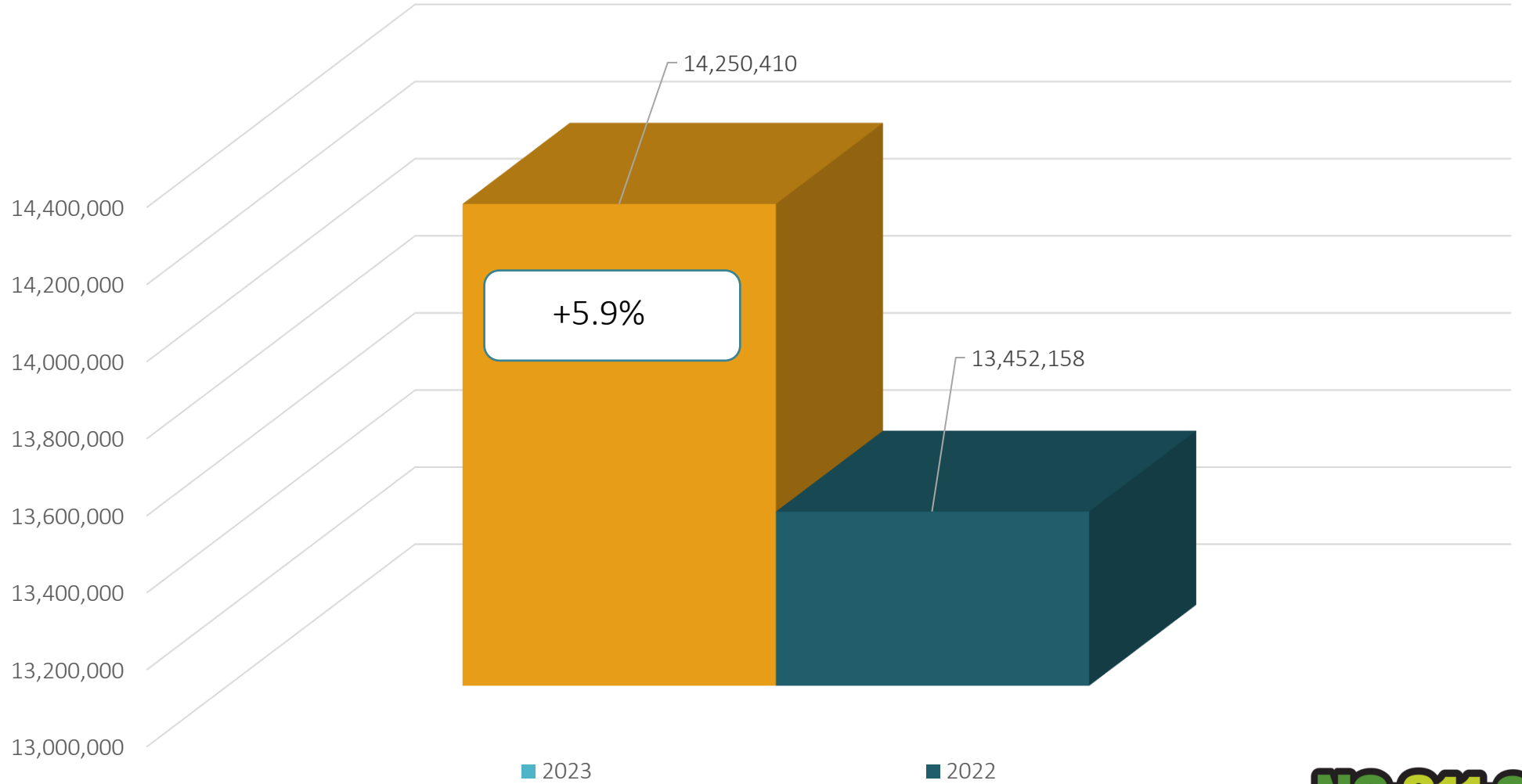
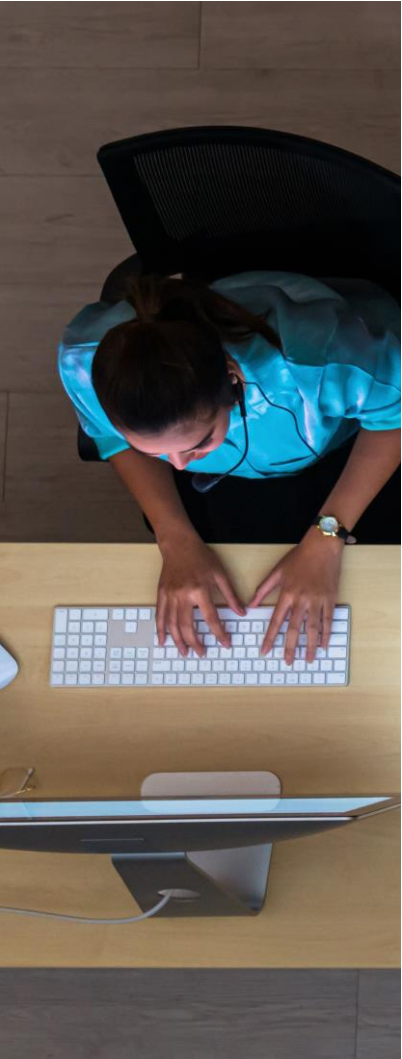
Transmissions MTD 2023 – 975,655 / 2022 – 915,621 = +6.6%  
Transmissions YTD 2023 – 14,250,410 / 2022 – 13,452,158 = +5.9%





# Transmissions for NC

## YTD 2023 vs 2022



Transmissions MTD 2023 – 975,655 / 2022 – 915,621 = +6.6%  
Transmissions YTD 2023 – 14,250,410 / 2022 – 13,452,158 = +5.9%



# COUNTY TICKET VOLUME

2023 VS 2022



<b>Cumberland</b>	<b>3 HR</b>	<b>CNCL</b>	<b>NEW</b>	<b>RXMT</b>	<b>UPDT</b>	<b>TOTAL Tickets</b>
2022	55	28	2177	29	917	3206
2023	73	34	2603	39	1409	4158
+/- Var	32.7%	21.4%	19.6%	34.5%	53.7%	29.7%
		Avg Locates per Day				219

# COUNTY TICKET VOLUME

YTD VS PREVIOUS YEAR



<b>Cumberland</b>	<b>3 HR</b>	<b>CNCL</b>	<b>NEW</b>	<b>RXMT</b>	<b>UPDT</b>	<b>TOTAL Tickets</b>
2022	2285	546	45388	910	17175	66304
2023	1199	543	39397	600	18312	60051
+/- Var	-47.5%	-0.5%	-13.2%	-34.1%	6.6%	-9.4%
		Avg Locates per Day				241



# COUNTY TICKET DISTRIBUTION - DECEMBER



County/Place	12 Dec
<b>CUMBERLAND</b>	<b>4158</b>
CEDAR CREEK	4
CLIFDALE	1
CUMBERLAND	4
EAST FAYETTEVILLE	
<b>EASTOVER</b>	<b>197</b>
<b>FALCON</b>	<b>108</b>
<b>FAYETTEVILLE</b>	<b>2920</b>
FORT BRAGG	13
<b>FORT LIBERTY</b>	<b>118</b>
GODWIN	84
GRAYS CREEK	20
<b>HOPE MILLS</b>	<b>450</b>

LINDEN	26
POPE AIR FORCE BASE	1
<b>SPRING LAKE</b>	<b>99</b>
STEDMAN	62
VANDER	8
WADE	43

# Top 10 Callers for - Cumberland



Rank	Name	Totals
1	RG COMMUNICATIONS, INC	258
2	CINTERRA	206
3	S T WOOTEN CORPORATION	188
4	TELECOM GUILD	176
5	CANOS SERVICES, LLC	155
6	FAYETTEVILLE PWC	142
7	CAVO BROADBAND COMMUNICATIONS, LLC	137
8	SOLUTIONS UNDERGROUND, LLC	134
9	RLC	120
10	S T WOOTEN CORPORATION	100

# DAMAGES



**DIRT** Damage Information  
Reporting Tool





# Damages Reported for December



NC-Alamance	18
NC-Alexander	3
NC-Anson	3
NC-Bladen	1
NC-Brunswick	5
NC-Buncombe	12
NC-Burke	3
NC-Cabarrus	4
NC-Caldwell	1
NC-Carteret	2
NC-Catawba	8
NC-Chatham	18
NC-Cherokee	1
NC-Clay	1
NC-Cleveland	6
NC-Columbus	2
NC-Craven	8
NC-Cumberland	25
NC-Currituck	2
NC-Dare	7
NC-Davidson	7
NC-Davie	2

NC-Duplin	1
NC-Durham	47
NC-Edgecombe	1
NC-Forsyth	32
NC-Franklin	7
NC-Gaston	26
NC-Graham	1
NC-Granville	3
NC-Greene	2
NC-Guilford	51
NC-Harnett	18
NC-Henderson	6
NC-Hertford	6
NC-Hoke	2
NC-Iredell	19
NC-Johnston	15
NC-Lee	6
NC-Lincoln	4
NC-McDowell	2
NC-Mecklenburg	158
NC-Moore	14
NC-Nash	4

NC-New Hanover	14
NC-Onslow	15
NC-Orange	68
NC-Pamlico	1
NC-Pender	3
NC-Perquimans	2
NC-Person	2
NC-Pitt	5
NC-Polk	1
NC-Randolph	7
NC-Robeson	2
NC-Rockingham	8
NC-Rowan	10
NC-Rutherford	3
NC-Sampson	1
NC-Stokes	1
NC-Surry	1
NC-Union	14
NC-Vance	3
NC-Wake	111
NC-Wayne	8
NC-Wilson	2
NC-Yadkin	2

**Grand Total 848**

