
NC811 MONTHLY UPDATE

JANUARY 2024

AVERY MITCHELL YANCEY

PRESENTED BY TYLER ROSS



EDUCATION TEAM



Ann Rushing
Education
Manager



Tami Groves
Southeast
Liaison



Howard Corey
Eastern Liaison



Tyler Ross
Western Liaison



**Parrish
Reddick**
Piedmont Liaison



Steven Moore
Media Relations
Specialist





A copy of this presentation is available at
www.ncucc.org

If this meeting was virtual or hybrid, a video is available on ncucc.org. Go to County UCC's.

The video will be listed under the month and year the meeting took place.

ANNOUNCEMENTS

Annual notices are going out via email to update member information by January 31st, 2024. Please update any information including maps to stay current as possible.



Contact Lesley Brouillard in Member Services at Lesley@nc811.org if you have any questions.



IMPORTANT DATES



STATE UCC

Tuesday, Jan 9
8:00 am

NC811 Events Center,
Greensboro

NCLRPC

Wednesday, Jan. 17
11 am

NC811 Events Center,
Greensboro

Visit <https://ncucc.org>
for meeting link

BOARD

Friday, Jan 19
8:00 am

Grandover Resort,
Greensboro

Contact

NCUDPRB

Tuesday, Jan 23
10 am

Visit
<https://udprb.nc.gov>

for location info
Stephanie Brown for
details.
stephanie@nc811.org

CALENDAR

NC811 & NCUCC event calendars can be found on nc811.org or the nc811 app



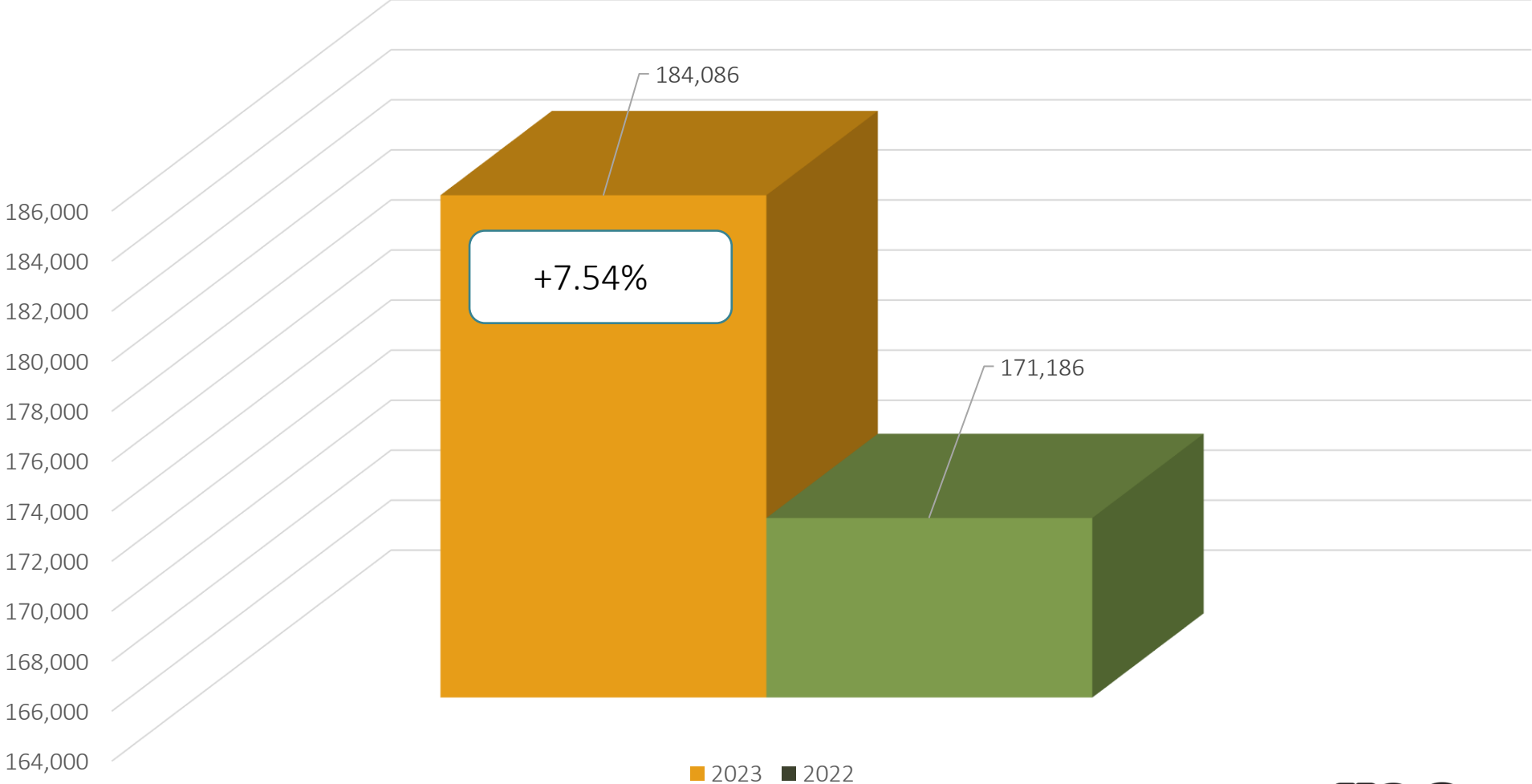
DATA INSIGHTS

Locate Request, Transmissions,
County ticket volume and distribution



Locate Requests for NC

December 2023 vs 2022

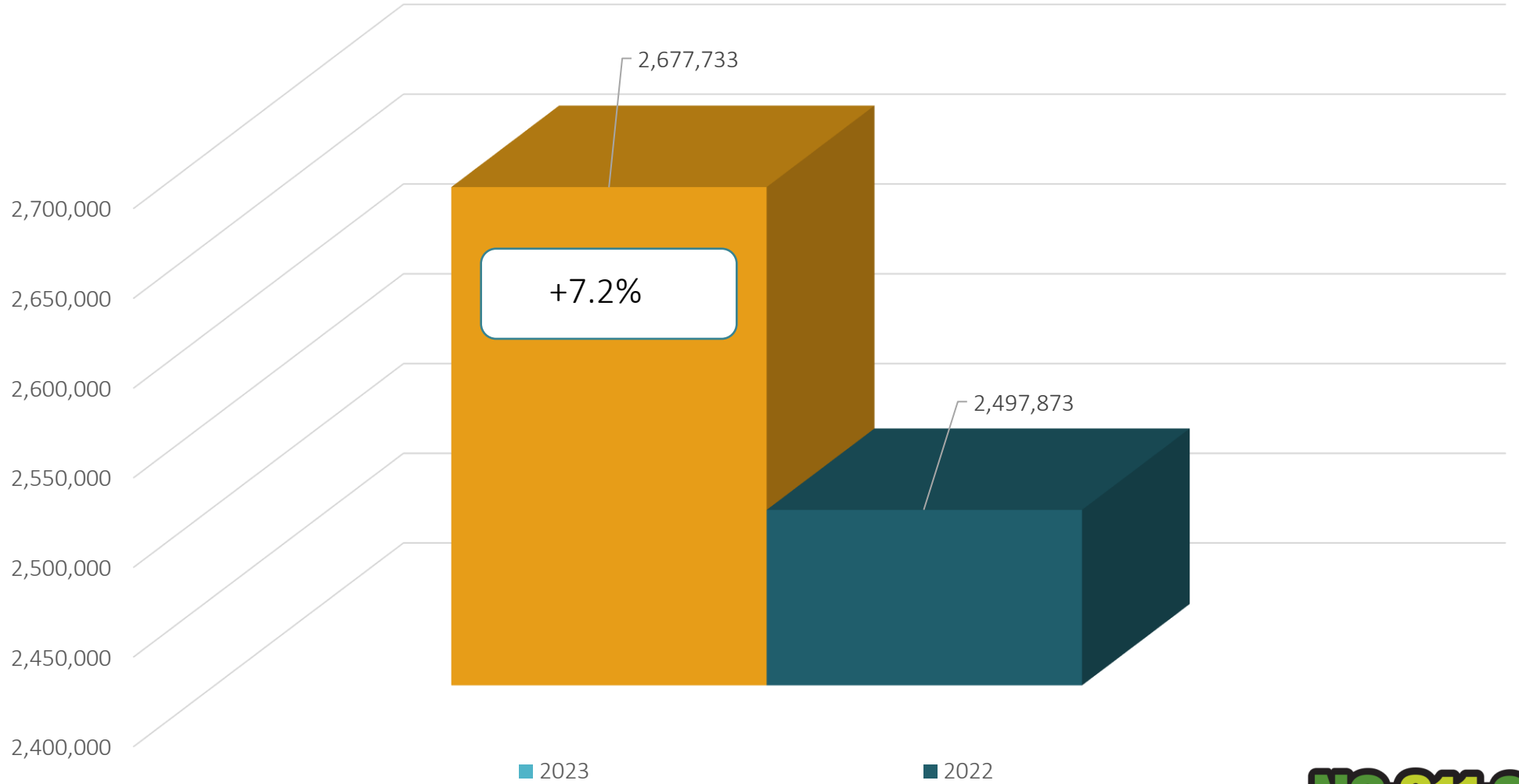
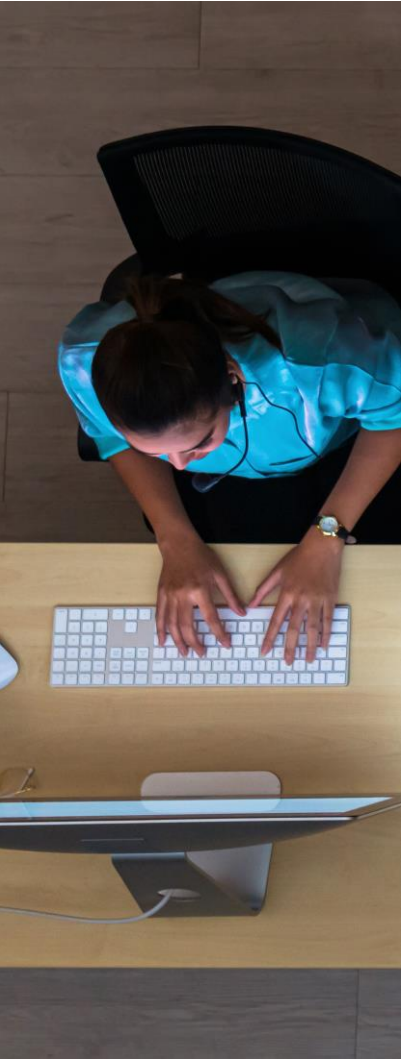


MTD December 2023 – 184,086 / 2022 – 171,186 = +7.54%
YTD 2023 – 2,677,733 / 2022 – 2,497,873 = +7.2 %
Updates for December 2023 – (60,202) = 32.7% of volume / November 31.5% = +1.2% (Increase the month before)



Locate Requests for NC

YTD 2023 vs 2022



MTD December 2023 – 184,086 / 2022 – 171,186 = +7.54%

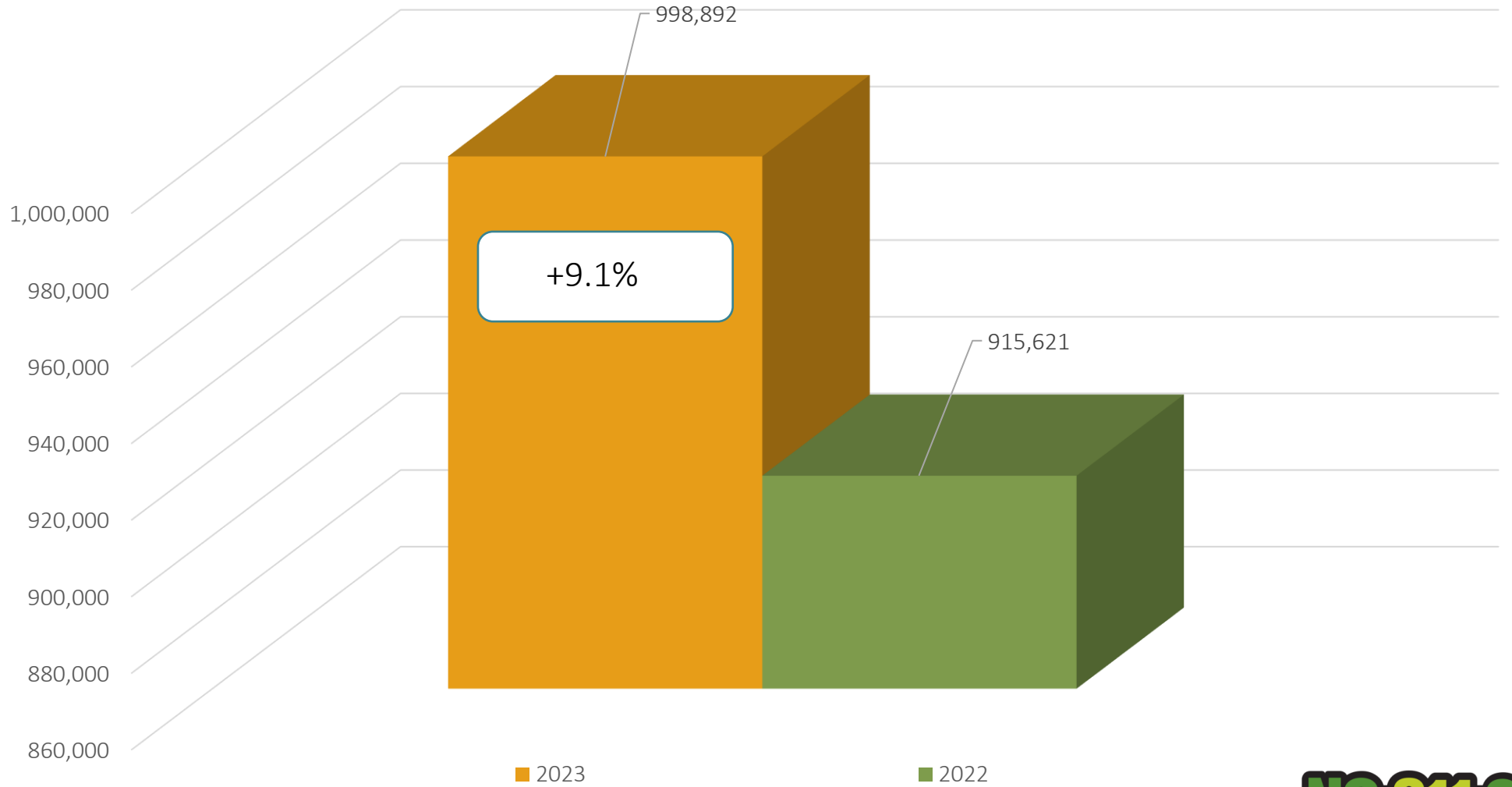
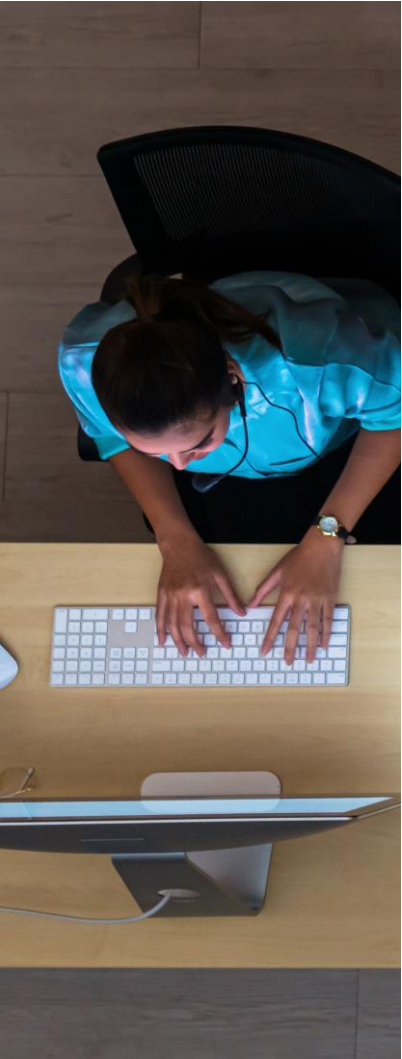
YTD 2023 – 2,677,733 / 2022 – 2,497,873 = +7.2 %

Updates for December 2023 – (60,202) = 32.7% of volume / November 31.5% = +1.2% (Increase the month before)



Transmissions for NC

December 2023 vs 2022

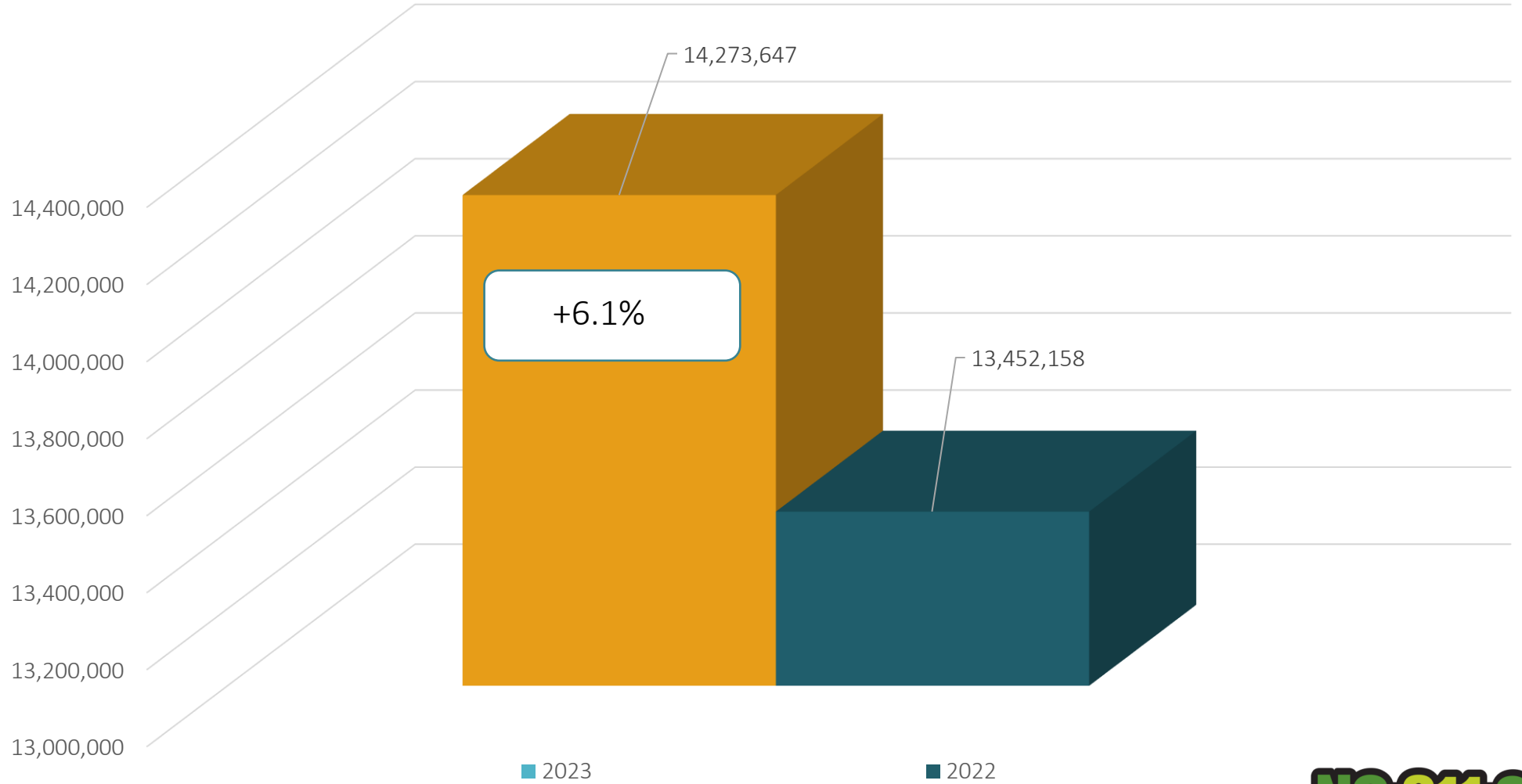
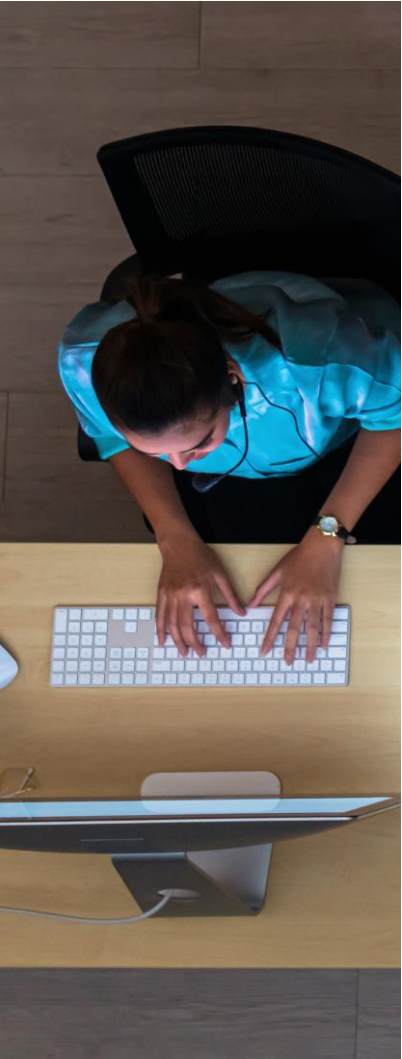


Transmissions MTD 2023 – 998,892 / 2022 – 915,621 = +9.1%
Transmissions YTD 2023 – 14,273,647 / 2022 – 13,452,158 = +6.1%



Transmissions for NC

YTD 2023 vs 2022



Transmissions MTD 2023 – 998,892 / 2022 – 915,621 = +9.1%
Transmissions YTD 2023 – 14,273,647 / 2022 – 13,452,158 = +6.1%



COUNTY TICKET

2023 VS 2022

VOLUME

Avery	3 HR	CNCL	NEW	RXMT	UPDT	TOTAL Tickets
2022	5	2	79	3	27	116
2023	1	0	73	4	22	100
	-80.0%	-100.0%	-7.6%	33.3%	-18.5%	-13.8%
				Avg Locates per Day		5

COUNTY TICKET

2023 VS 2022

VOLUME

Mitchell	3 HR	CNCL	NEW	RXMT	UPDT	TOTAL Tickets
2022	0	0	39	1	6	46
2023	0	0	28	2	13	43
	0	0	-28.2%	100.0%	116.7%	-6.5%
				Avg Locates per Day		2

COUNTY TICKET

2023 VS 2022

VOLUME

Yancey	3 HR	CNCL	NEW	RXMT	UPDT	TOTAL Tickets
2022	1	0	35	1	7	44
2023	1	0	44	1	12	58
	0.0%	0	25.7%	0.0%	71.4%	31.8%
				Avg Locates per Day		3

COUNTY TICKET VOLUME

YTD VS PREVIOUS
YEAR

Avery	3 HR	CNCL	NEW	RXMT	UPDT	TOTAL Tickets
2022	71	24	1980	70	337	2482
2023	55	23	1573	69	230	1950
	-22.5%	-4.2%	-20.6%	-1.4%	-31.8%	-21.4%
				Avg Locates per Day		8

COUNTY TICKET VOLUME

YTD VS PREVIOUS
YEAR

Mitchell	3 HR	CNCL	NEW	RXMT	UPDT	TOTAL Tickets
2022	25	8	717	22	152	924
2023	18	9	620	25	188	860
	-28.0%	12.5%	-13.5%	13.6%	23.7%	-6.9%
				Avg Locates per Day		3

COUNTY TICKET VOLUME

YTD VS PREVIOUS
YEAR

Yancey	3 HR	CNCL	NEW	RXMT	UPDT	TOTAL Tickets
2022	28	9	740	27	150	954
2023	16	5	762	34	156	973
	-42.9%	-44.4%	3.0%	25.9%	4.0%	2.0%
				Avg Locates per Day		4

COUNTY TICKET DISTRIBUTION

AVERY	100
BANNER ELK	42
BEECH MOUNTAIN	1
ELK PARK	1
GRANDFATHER VILLAGE	1
INGALLS	6
LINVILLE	7
NEVLAND	30
PINEOLA	1
SEVEN DEVILS	1
SUGAR MOUNTAIN	10

COUNTY TICKET DISTRIBUTION

MITCHELL	43
BAKERSVILLE	14
LEDGER	1
SPRUCE PINE	28

COUNTY TICKET DISTRIBUTION

YANCEY	58
BALD MOUNTAIN	2
BURNSVILLE	54
PRICE CREEK	2

Top 10 Callers for -Avery



1	LKN UNDERGROUND	20
2	BIGHAM CABLE CONSTRUCTION, INC	14
3	MILLER PIPELINE	7
4	BLOSSMAN GAS	5
5	PEACE OF MIND PROPERTY	5
6	MB HAYNES CORPORATION	4
7	DUKE ENERGY	4
8	MOUNTAIN ELECTRIC COOPERATIVE	3
9	TOWN OF NEWLAND	3
10	CHRIS LYERLY	2

Top 10 Callers for -Mitchell



1	NATIONAL ONDEMAND	6
2	MB HAYNES CORPORATION	5
3	MILLER PIPELINE	3
4	N H M CONSTRUCTORS LLC	3
5	NATIONAL ONDEMAND	2
6	PHILLIPS GRADING INC	2
7	DUKE ENERGY	2
8	ERIC NEWTON TRENCHING	2
9	HAYNES ELECTRIC UTILITY CORPORATION	2
10	JOHN CAMPBELL	2

Top 10 Callers for -Yancey



1	FRENCH BROAD EMC	16
2	MILLER PIPELINE	11
3	TOWN OF BURNSVILLE	5
4	YOUNG AND MCQUEEN GRADING COMPANY INC	4
5	FRENCH BROAD EMC	4
6	BIGHAM CABLE CONSTRUCTION, INC	4
7	CHRISTINA TYLER	2
8	MOUNT VALLEY FOUNDATION SERVICES	2
9	YANCEY COUNTY FARM BUREAU	2
10	TOWN OF BURNSVILLE	2

DAMAGES



DIRT Damage Information
Reporting Tool

Damages Reported for December



NC-Alamance	18
NC-Alexander	3
NC-Anson	3
NC-Bladen	1
NC-Brunswick	5
NC-Buncombe	12
NC-Burke	3
NC-Cabarrus	4
NC-Caldwell	1
NC-Carteret	2
NC-Catawba	8
NC-Chatham	18
NC-Cherokee	1
NC-Clay	1
NC-Cleveland	6
NC-Columbus	2
NC-Craven	8
NC-Cumberland	25
NC-Currituck	2
NC-Dare	7
NC-Davidson	7
NC-Davie	2

NC-Duplin	1
NC-Durham	47
NC-Edgecombe	1
NC-Forsyth	32
NC-Franklin	7
NC-Gaston	26
NC-Graham	1
NC-Granville	3
NC-Greene	2
NC-Guilford	51
NC-Harnett	18
NC-Henderson	6
NC-Hertford	6
NC-Hoke	2
NC-Iredell	19
NC-Johnston	15
NC-Lee	6
NC-Lincoln	4
NC-McDowell	2
NC-Mecklenburg	158
NC-Moore	14
NC-Nash	4
NC-New Hanover	14
NC-Onslow	15
NC-Orange	68

NC-Pamlico	1
NC-Pender	3
NC-Perquimans	2
NC-Person	2
NC-Pitt	5
NC-Polk	1
NC-Randolph	7
NC-Robeson	2
NC-Rockingham	8
NC-Rowan	10
NC-Rutherford	3
NC-Sampson	1
NC-Stokes	1
NC-Surry	1
NC-Union	14
NC-Vance	3
NC-Wake	111
NC-Wayne	8
NC-Wilson	2
NC-Yadkin	2

Grand Total 848

