



NC811 MONTHLY UPDATE

JANUARY 2026

LEE COUNTY UCC



ANNOUNCEMENTS

Annual notices are going out via email to update member information by January 31st, 2026. Please update any information including maps to stay current as possible.



Contact Lesley Brouillard in Member Services at Lesley@nc811.org if you have any questions.





UPCOMING MEETINGS

- STATE UCC – January 13, 10am
NC811 Greensboro Office
- NC811 Board Meeting – January 16, 8:30am
Embassy Suites by Hilton Greensboro Airport
- UDPRB – January 20, 10am
NC811 Greensboro Office
- NCLRPC – January 21, 11am
NC811 Greensboro Office



HOLIDAY CALENDAR

HOLIDAY	DATE	DAY OF WEEK
New Years Day	January 1	Thursday
*Martin Luther King Jr's Birthday	January 19	Monday
Good Friday	April 3	Friday
Memorial Day	May 25	Monday
Independence Day	July 3	Friday
Labor Day	September 7	Monday
*Veterans Day	November 11	Wednesday
Thanksgiving	November 26	Thursday
*Thanksgiving Day After	November 27	Friday
Christmas Eve	December 24	Thursday
Christmas Day	December 25	Friday
*Christmas Day After	December 28	Monday

All above holidays are excluded from the three working day notice.

* Denotes Observed Holidays. NC811 will be open to accept all locate requests on observed holidays.

The observed holiday is excluded from the three working day notice as well.



Feb 27th - March 1nd, 2026
NC State Fairgrounds, Raleigh



dixiedeerclassic.org



CALENDAR

NC811 & NCUCC
event calendars can
be found on
nc811.org or the
nc811 app



DATA INSIGHTS

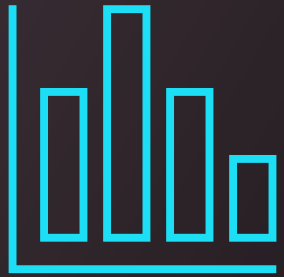
LOCATE REQUESTS

TRANSMISSIONS

COUNTY TICKET VOLUME

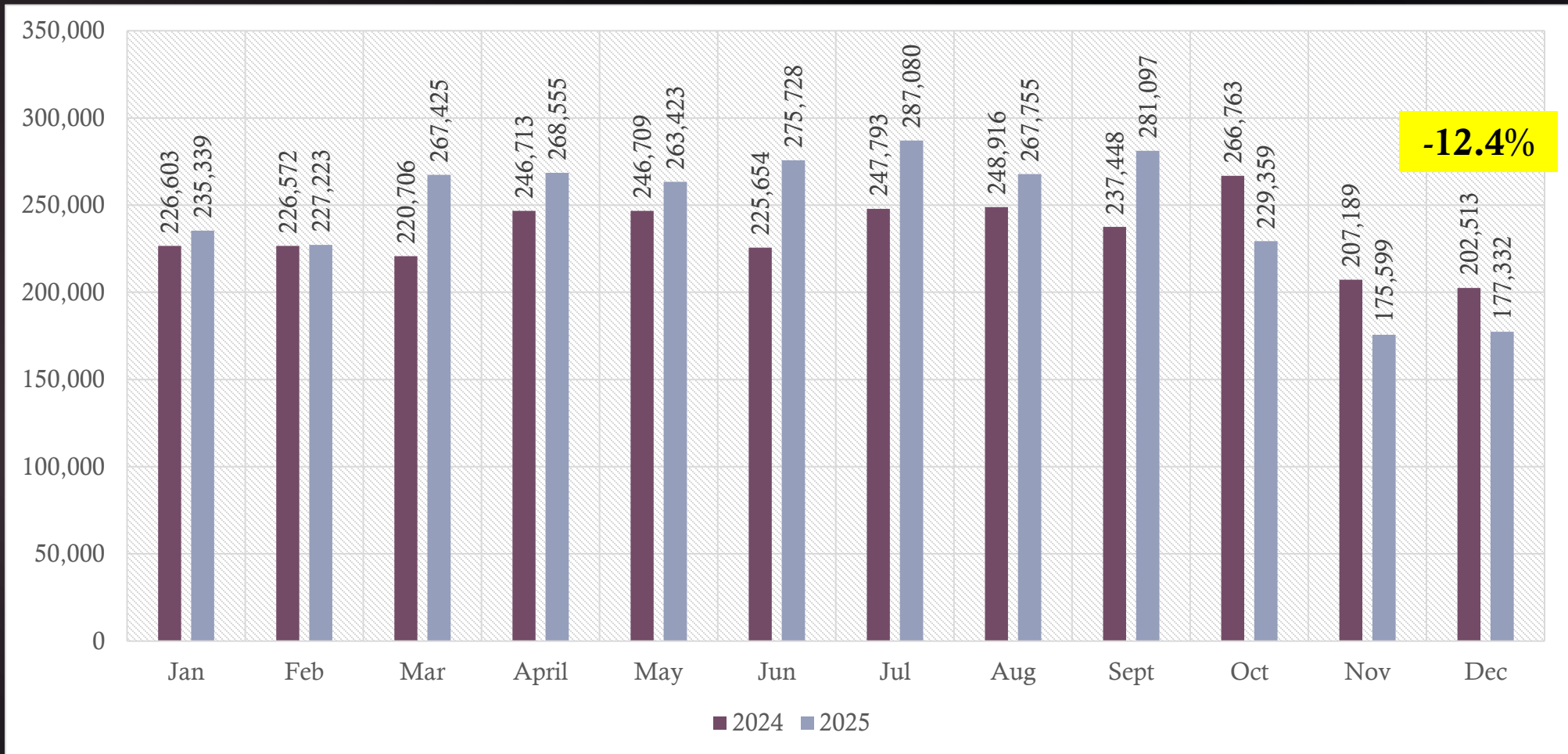
TOP 10 CALLERS

DAMAGE INFORMATION



LOCATE REQUESTS FOR NC 2024 VS 2025

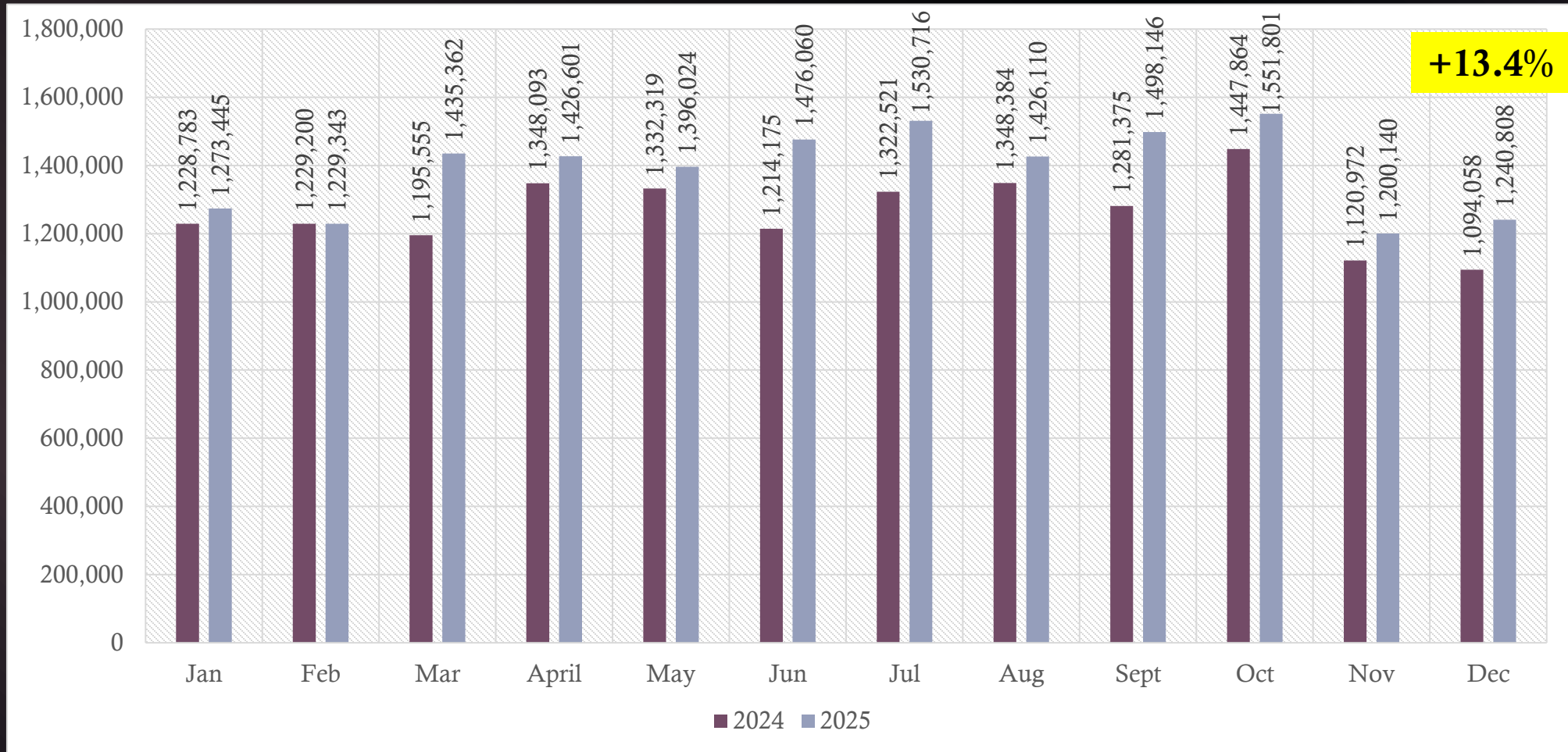
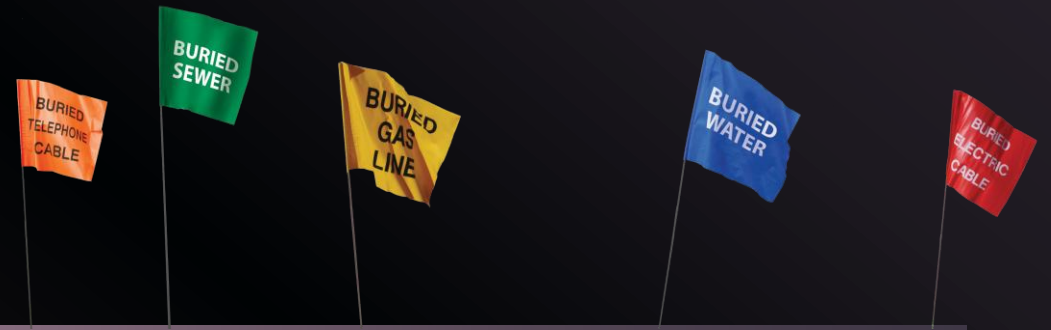
2025 YTD – 2,941,372
2024 YTD – 2,803,579
+ 4.9%



TRANSMISSIONS FOR NC

2024 VS 2025

2025 YTD – 16,617,950
2024 YTD – 15,163,299
+9.6%





LOCATE REQUESTS & TRANSMISSIONS

DECEMBER – LEE COUNTY

LOCATE REQUESTS: **1332**

TRANSMISSIONS: **8731**

DAMAGES

DIRT Damage Information
Reporting Tool





DECEMBER Damages

Grand Total 990

ALAMANCE	21
ALEXANDER	5
ANSON	4
AVERY	3
BEAUFORT	1
BLADEN	2
BRUNSWICK	5
BUNCOMBE	14
BURKE	2
CABARRUS	15
CALDWELL	4
CARTERET	2
CATAWBA	22
CHATHAM	15
CHEROKEE	1
CLEVELAND	11
COLUMBUS	5
CRAVEN	9
CUMBERLAND	21
DARE	4
DAVIDSON	15
DAVIE	4

DUPLIN	1
DURHAM	86
EDGECOMBE	2
FORSYTH	20
FRANKLIN	10
GASTON	13
GUILFORD	50
HALIFAX	5
HARNETT	28
HENDERSON	8
HERTFORD	1
HOKE	2
IREDELL	16
JACKSON	1
JOHNSTON	51
LEE	16
LENOIR	6
LINCOLN	9
MCDOWELL	3
MECKLENBURG	113
MONTGOMERY	1
MOORE	19
NASH	5
NEW HANOVER	27
NORTHAMPTON	5

ONslow	12
ORANGE	9
PENDER	8
PERQUIMANS	1
PERSON	1
PITT	22
POLK	2
RANDOLPH	11
RICHMOND	1
ROBESON	10
ROCKINGHAM	3
ROWAN	15
RUTHERFORD	2
SAMPSON	1
STANLY	2
STOKES	12
SURRY	3
TRANSYLVANIA	1
UNION	40
WAKE	135
WARREN	1
WATAUGA	2
WAYNE	6
WILKES	2
WILSON	3
YADKIN	2



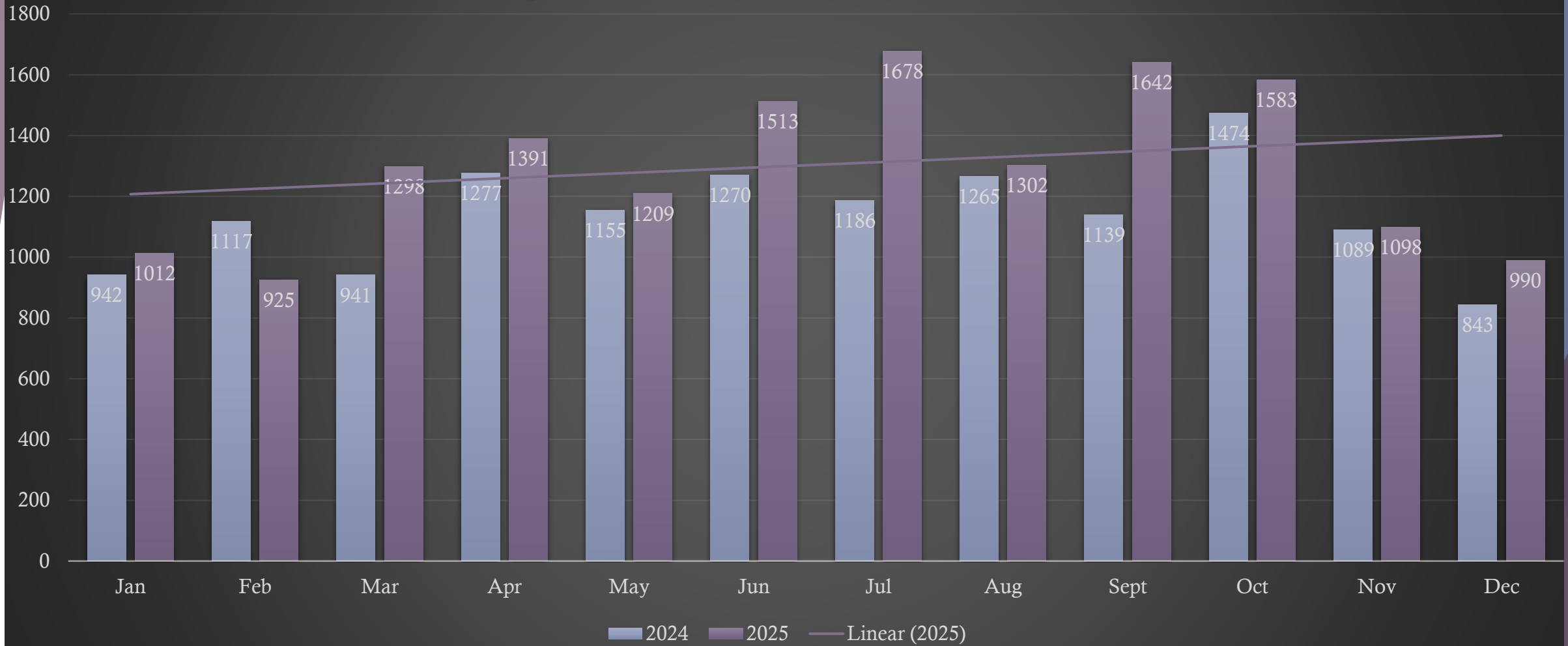
Damages County/Place - County Name

LEE	16
SANFORD	16



YTD 15,641

Damages in North Carolina 2025 vs 2024



NC811 EDUCATION TEAM



Ann Rushing
Education Manager



Parrish Riddick
Education Liaison, Piedmont Region



Rory Phipps
Education Liaison, Western Region



Howard Corey
Education Liaison, Eastern Region



Tami Groves
Education Liaison, Southwest Region



Steve Moore
Media Relations Specialist

THANK YOU FOR YOUR ATTENTION



A copy of this presentation
will be available at
www.ncucc.org

